



Philips 6000 series 3D Ultra-Slim Smart LED TV 47PFL6008S 119 cm (47'') Easy 3D DVB-T/T2/C/S/S2 with Ambilight 2-sided XL and Pixel Precise HD
47PFL6008S/12
QFU1.2ELA

Service information

[Print this page](#)

[Back to Service Information](#)

Reference no.: SCC_111033

Symptom

Fusion 2k13 TV set has no AmbiLight function after SSB replacement.

Cure

AFFECTED:
Fusion 2k13 TV sets based on chassis QFU1.2E.
SSB has been replaced.

INFO:
After switching the TV set on, the AmbiLight (AL) is not working or switches off after a few seconds.

Probably, the AL fuse on the replaced SSB is blown.
A short circuit may have occurred on the replacement SSB at the moment the modules were reconnected while SSB power was already ON.

SOLUTION:

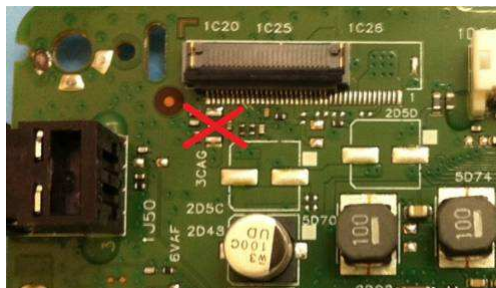
Call Centers: Direct the customer to contact Work Shop according local practice.

Work Shops: Check the AmbiLight wiring and fuse and replace if necessary:

1. Check the AL wiring for squeezed or bad connected cables.
2. Check the AL fuse (position 1UA2), which is located near connector 1M90 as shown on picture:



Note that the AL fuse is NOT located near the AL connector (see following picture)!



3. Replace the AL fuse if blown.

REMARK:

To avoid the AL fuse is blown, always make sure the TV set is disconnected from power before connecting any AL cable to the SSB!

REFERENCE:

HISTORY:

2015-07-29: Introduction